

# State of Wyoming Corner Record

(in compliance with the CORNER PERPETUATION AND FILING ACT, Wyoming Statutes, 1997, Section 33-29-140, et. seq. and the Rules and Regulations of the Board of Registration for Professional Engineers and Professional Land Surveyors)

Reverse side of this form may be used if more space is needed.

Record of original survey and citation of source of historical information (if corner is lost or obliterated). Description of corner monumentation evidence found and/or monument and accessories established to perpetuate the location of this corner. Sketch of relative location of monument, accessories, and reference points with course and distance to adjacent corner(s) (if determined in this survey). Method and rationale for reestablishment of lost or obliterated corner.

**FOUND:** FOUND STONE WELL SET AND MARKED ON SOUTH SIDE. STONE IS 0.75' (N-S) X 0.5' (E-W) AND 0.45' ABOVE GROUND SURFACE.

**G.L.O. RECORD:** UNKNOWN

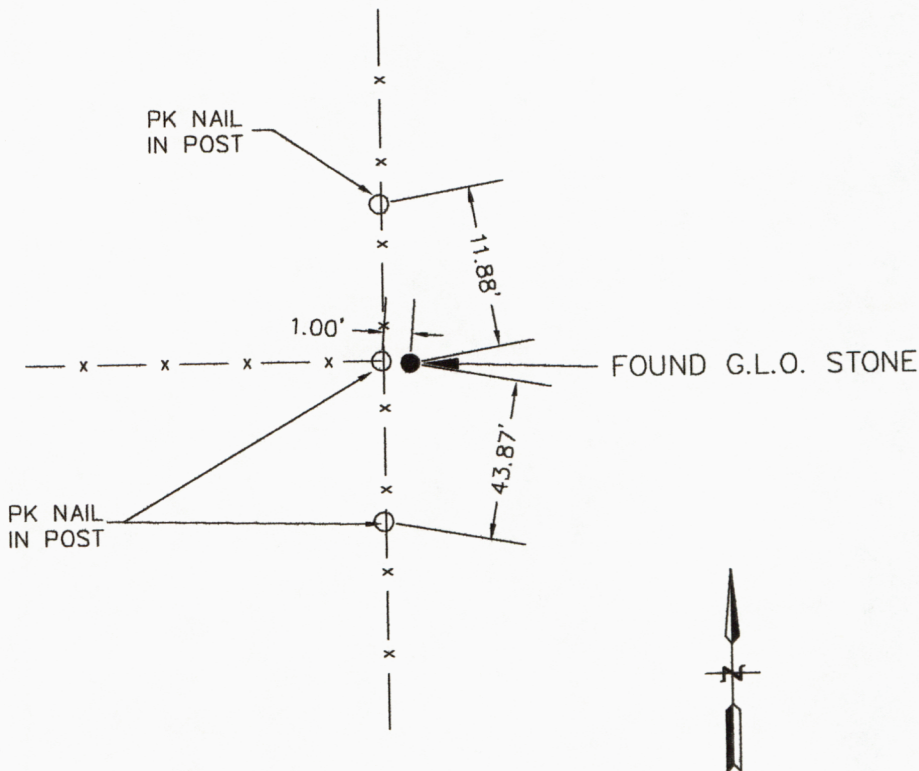
GLO STONE

**SET:** NOTHING SET



**REFERENCES:** SEE BELOW

W	W	
68	67	
R	R	
25	30	T 14 N
36	31	



Date of Field Work: 4/2001 Office Reference: 2-2237.00

Firm/Agency, Address

James D. Voeller, P.E. & P.L.S.

A.V.I., p.c.

2035 Westland Road

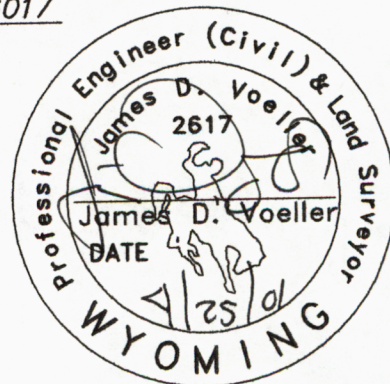
Cheyenne, WY 82001

Telephone Number: (307) 637-6017

This corner record was prepared by me or under my direction and supervision.  
SEAL & SIGNATURE

**CROSS INDEX DIAGRAM**

A	1	2	3	4	5	6	7	8	9	10	11	12	13	14	15	16	17	18	19	20	21	22	23	24	25
B																									
C	6			5					4											3					
D																									
E																									
F																									
G	7			8					9											10					
H																									
J																									
K																									
L	18			17					16											15					
M																									
N																									
O																									
P	19			20					21											22					
Q																									
R																									
S																									
T	30			29					28											27					
U																									
V																									
W																									
X	31			32					33											34					
Y																									
Z																									



Corner Name: SECTION CORNER Section: 25|30 36|31 T 14 R 67 ; 6th P.M. Cross-Index No.: V-1  
SBRPEPLS/PLSW: March 1994

RECORDED 4/25/2001 AT 3:07 PM REC# 293555 BK# 1587 PG# 1590  
DEBRA K. LATHROP, CLERK OF LARAMIE COUNTY, WY PAGE 1 OF 1